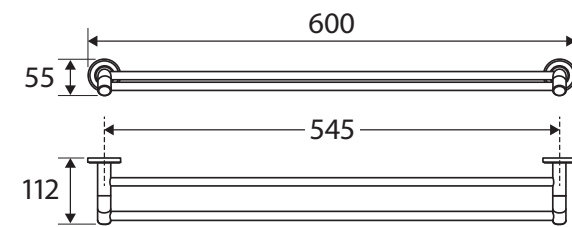
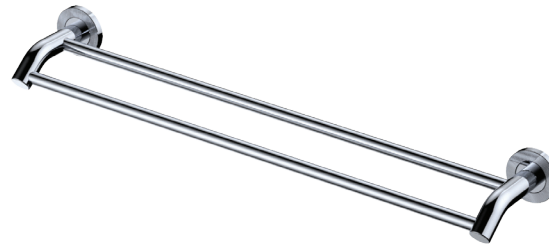


# Axle®

## DOUBLE TOWEL RAIL, 600MM

### Features

- Industrial cross-hatched cover plates
- Super strong 5-point wall mount
- Adjustable no-spin rail design (cut to length)
- Sloping arm design makes it easier to hang towels
- Fully concealed fixings
- Made from zinc and stainless steel
- Hex key not required for mounting (only used to secure rail)



(Adjustable – cut to length)

### Available in



Electroplated  
Chrome  
**8310860**

### Cleaning & Care

- Regularly clean with mild soapy water using a microfibre cloth.
- In highly polluted or coastal locations, we recommend cleaning 2-3 times per week.
- Do not use harsh detergents, bleach, cream cleaners or citrus based cleaners. These substances are abrasive and will damage the surface.
- Do not use undue pressure and wipe in one direction only

We aim to ensure that specifications are correct at the time of publication. All measurements are shown in millimetres. Always use measurements of actual product received for final specification as the technical drawing may contain differences. Due to printing limitations, physical colour may vary from the image shown. Fienza reserves the right to make modifications without prior notice.