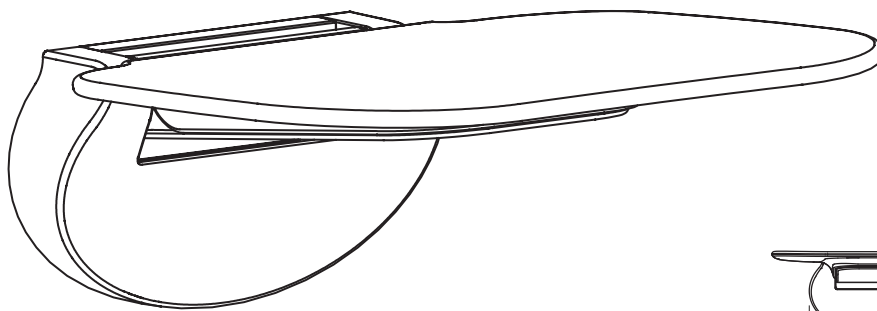


Folding Shower Seat

FAL006

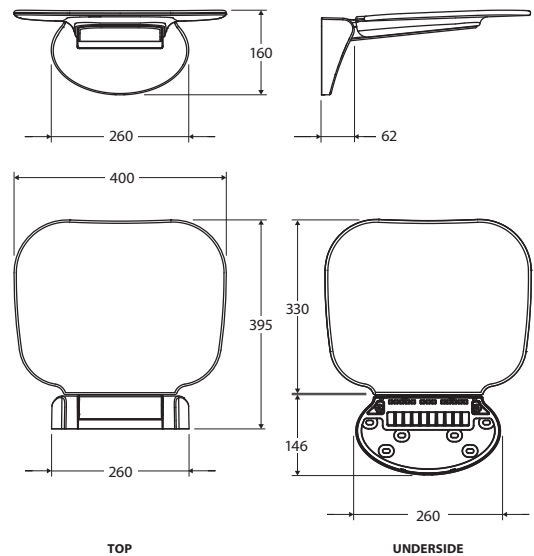
White **FAL006**

Black **FAL006B**



⚠ CHECK GOODS THOROUGHLY BEFORE INSTALLATION
 Installation of received goods that are damaged, warped or faulty will void warranty. Ensure all items meet your plumbing requirements.

⚠ PLEASE LEAVE THIS GUIDE WITH THE OWNER



Installation Instructions

PLEASE READ CAREFULLY BEFORE INSTALLATION

IMPORTANT: This shower seat must be mounted to the wall studs. Grade 304 Stainless Steel M8 x 70mm hex head screws and 10mm wall plugs are included.

NOTE: This product must be installed by a licensed tradesperson.

Cleaning & Care

- Clean regularly using a mild liquid detergent and water.
- Do not use cream cleaners or bleach. These substances are abrasive.
- Do not use cleaning pads with abrasive surfaces as this may scratch the materials.

All installations should be carried out by a qualified tradesman in compliance with the National Plumbing & Drainage Code and any State or Local Authority Regulations, in accordance with AS/NZS 3500 series of standards and AS/NZA 6400. All measurements are in millimetres and are subject to change without notice. For ceramic products, please allow +/- 10 mm tolerance for manufacturing variance. Please refer to fienza.com.au for the latest product specification.

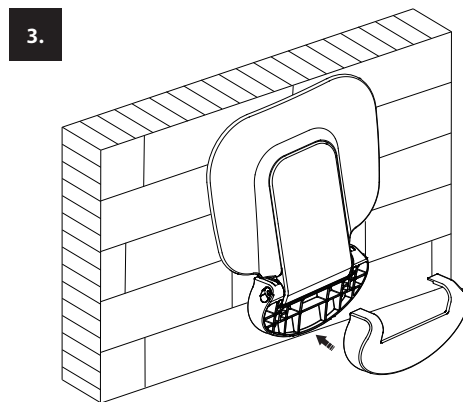
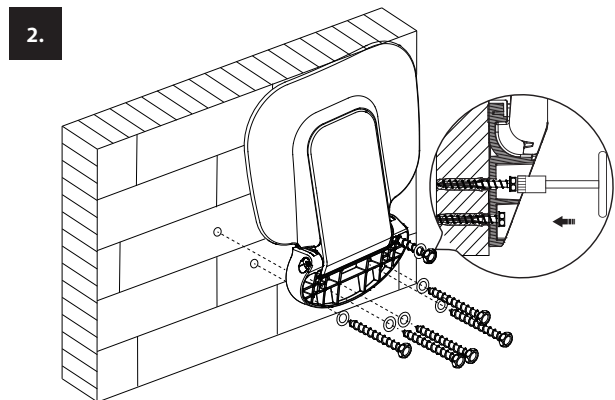
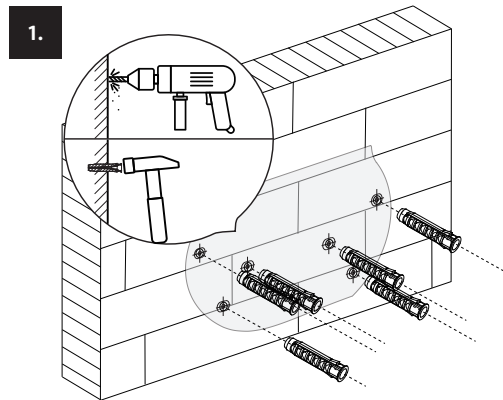
Installation

1. Determine the position of the shower seat on the wall. The recommended height of the seat when folded down, is between 470mm and 480mm from floor level. Check that when the seat is folded up that it does not cause a hazard or impede access to the shower entry, any grab rails or shower fittings/hardware.
2. Checking levels and the wall stud positions, use the supplied template to mark the location of the six wall fixing holes on the wall.
3. Using a suitable 10mm drill bit drill the marked hole locations to a depth of 65mm.
4. Insert the wall plugs into the drilled holes in the wall. (Fig.1)
5. Remove the base cover from the shower seat.
6. Place the shower seat on the wall (in its closed position) and align the mounting holes with the wall plugs.
7. Insert the supplied washer and M8 screws and tighten. (Fig.2)
8. Replace the base cover on the seat. (Fig.3)
9. Check to ensure that the seat is mounted securely and is operating correctly.

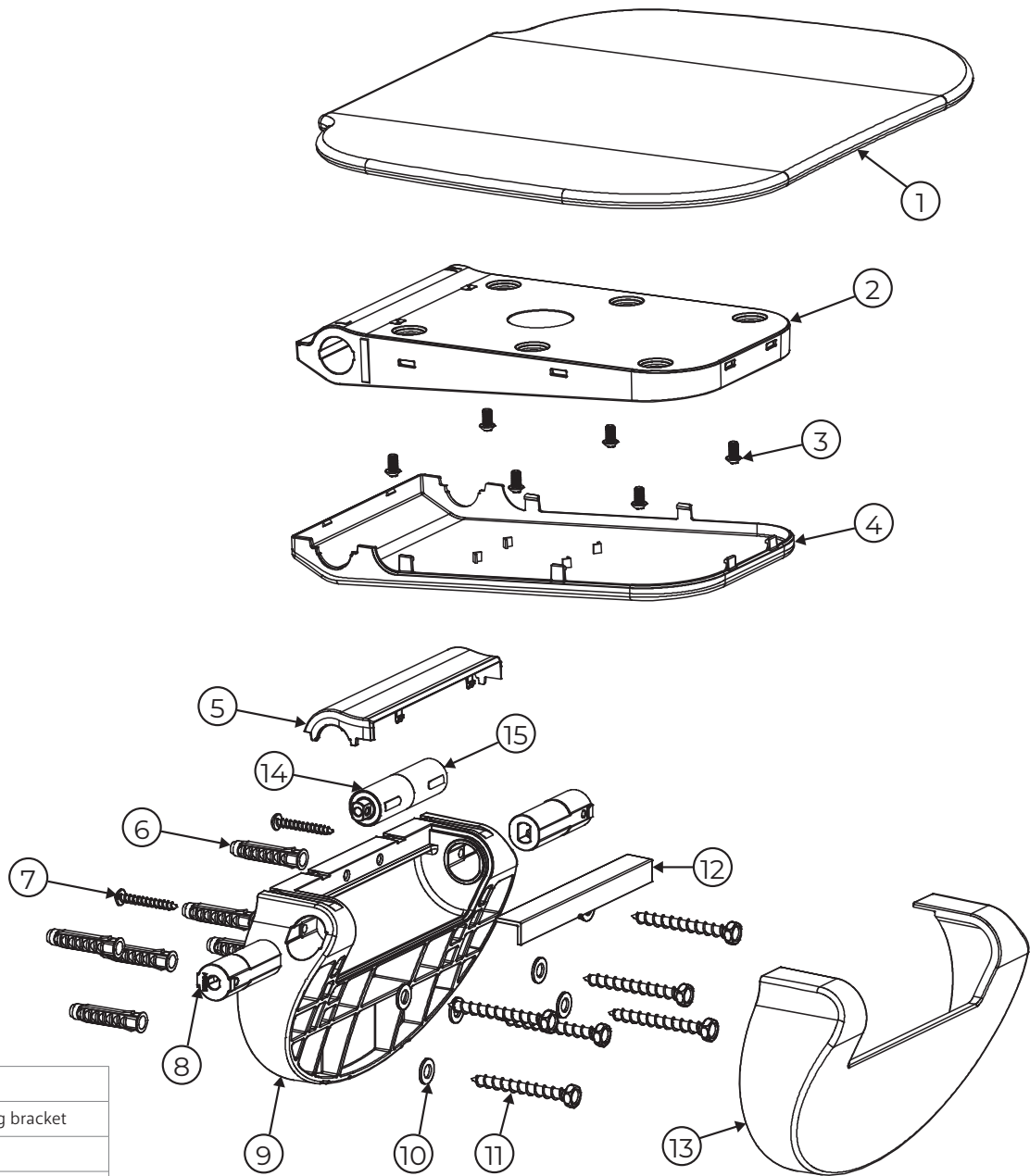
Operations

The shower seat only requires one hand operation to raise and lower the seat. The shower seat has a built-in soft-lowering mechanism. To lower the seat - start to lower the seat manually and then release. The seat will continue until it reaches the full open position. It is recommended to fold the seat up when not in use.

CAUTION: Do not exceed the maximum load rating of 150kg



Product Components



1	Seat pad
2	Supporting bracket
3	Screw
4	Bracket front cover
5	Bracket back cover
6	Nylon bolt cap
7	Self-tapping screw
8	Rotating shaft
9	Mounting base
10	Gasket
11	Screw
12	Cover strip
13	Base cover
14	Slow down damper
15	Slow down damper

All installations should be carried out by a qualified tradesman in compliance with the National Plumbing & Drainage Code and any State or Local Authority Regulations, in accordance with AS/NZS 3500 series of standards and AS/NZA 6400. All measurements are in millimetres and are subject to change without notice. For ceramic products, please allow +/- 10 mm tolerance for manufacturing variance. Please refer to fienza.com.au for the latest product specification.

Warranties

Residential Warranty Periods

Applies to domestic uses and applications of Fienza® products, such as private dwellings and retirement villages.

Commercial Warranty Periods

Applies to commercial uses and applications of Fienza® products, including, but not limited to: commercial food premises such as restaurants; commercial accommodation such as hotels; hospitals and healthcare facilities; public amenities; and industrial, laboratory and manufacturing facilities.

Product Component	Residential	Commercial
Structure Only	5 years replacement parts or product	5 years replacement parts or product
Spare Parts	1 year replacement parts or product	1 year replacement parts or product

Australian Consumer Law

Our goods include guarantees that cannot be excluded under the Australian Consumer Law. You are entitled to a replacement or refund for a major failure and compensation for any other reasonably foreseeable loss or damage. You are also entitled to have the goods repaired or replaced if the goods fail to be of acceptable quality and the failure does not amount to a major failure.

Fienza Pty Ltd reserves the right to make changes in product characteristics, packaging or availability at any time without notice. Please visit fienza.com.au for the latest information.

Warranty Conditions

- Installation has been carried out by a licensed tradesperson in accordance with all applicable Building, Plumbing and Electrical codes, and Federal, State, or Local Government Regulations in accordance with AS/NZS 3500 Plumbing & Drainage, AS/NZS 6400 Water Efficient Products, and AS/NZS 3000 Electrical standards for any installations to which these standards apply.
- All maintenance and adjustments to the product after the installation have been carried out by a licensed tradesperson.
- All care and cleaning instructions have been adhered to as prescribed.
- All goods of substandard quality manufacture (excluding imperfections permitted within AS1976 - Vitreous China used in Sanitary Applications) will be credited or replaced by Fienza when advised within the warranty period, subject to prior inspection and agreement.
- Proof of purchase is required for warranty claims.

Warranty Limitations

To the extent permitted under the Trade Practices Act and other relevant legislation, Fienza’s liability is limited to:

- The cost of replacing the goods, or
- The cost of obtaining equivalent goods, or
- The cost of having the goods repaired.
- Fienza is not responsible for any lack of operation or performance of goods (or any loss or damage) where goods are used or adapted for use with other goods not supplied by Fienza.
- It is the responsibility of the customer and installer before installation to ensure that all components are correct and free of obvious visible faults.
- Fienza is not responsible for the labour and rectification costs incurred in the above circumstance.

Conditions for On-Site Warranty Service Calls

Fienza will charge a service fee for each visit to an installation by its technician where it is determined that the fault is due to poorly executed or unlicensed installation work or where the product is not a genuine Fienza product or where the product is outside the warranty period. This may be paid in advance by credit card over the phone to a Fienza technician attending the site and will be refunded if the Fienza product is found to be at fault.

For warranty support, please contact Fienza

15 Walter Cres, Lawnton QLD 4501 PO Box 5381, Brendale QLD 4500
P 07 3490 6700 **F** 07 3490 6719 **E** help@fienza.com.au ABN 76 136 411 311



All installations should be carried out by a qualified tradesman in compliance with the National Plumbing & Drainage Code and any State or Local Authority Regulations, in accordance with AS/NZS 3500 series of standards and AS/NZA 6400. All measurements are in millimetres and are subject to change without notice. For ceramic products, please allow +/- 10 mm tolerance for manufacturing variance. Please refer to fienza.com.au for the latest product specification.