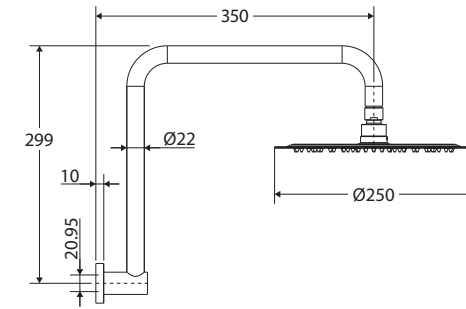


Kaya® GOOSENECK SHOWER ARM SET








Features

WELS 3 Star rated, 9L/min

- Ultra-thin 2 mm shower head
- Easy to clean TPR nozzles
- Brass swivel joint
- Made from lead-free stainless steel
- Flange included
- Female 1/2" BSP inlet



Available in

			
Electroplated Chrome 411125-A	Electroplated Matte White 411125MW-A	Electroplated Matte Black 411125B-A	
			
PVD Brushed Nickel 411125BN-A	PVD Gun Metal 411125GM-A	PVD Brushed Copper 411125CO-A	PVD Urban Brass 411125UB-A

Cleaning & Care

- Regularly clean with mild soapy water using a microfibre cloth.
- In highly polluted or coastal locations, we recommend cleaning 2-3 times per week.
- Do not use harsh detergents, bleach, cream cleaners or citrus based cleaners. These substances are abrasive and will damage the surface.
- Do not use undue pressure and wipe in one direction only.



We aim to ensure that specifications are correct at the time of publication. All measurements are shown in millimetres. Always use measurements of actual product received for final specification as the technical drawing may contain differences. Due to printing limitations, physical colour may vary from the image shown. Fienza reserves the right to make modifications without prior notice.