

Kaya

OUTDOOR TWIN SHOWER FLOOR MOUNTED

455190

WELS 3 Star rated, 9L/min (overhead & handheld)

Rail:

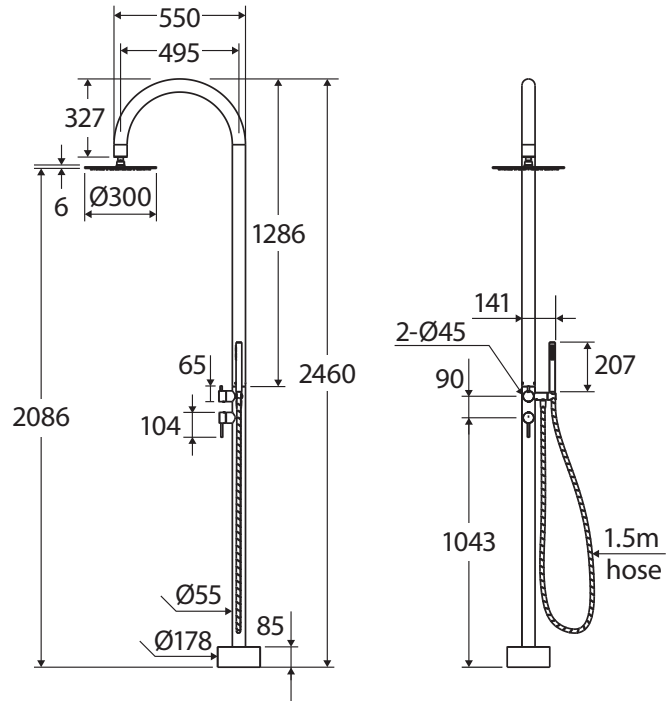
- Made from SS316 lead free stainless steel for outdoor use
- Integrated diverter and mixer
- Bottom water inlet
- 1.5 metre SS316 stainless steel hose
- Non-plumbed installation available for outdoor hose connection

Overhead Shower:

- 300 mm diameter
- Thin 6 mm profile
- Easy to clean TPR nozzles
- Made from SS316 lead free stainless steel for outdoor use
- Brass swivel joint
- Female 1/2" BSPP inlet

Hand Piece:

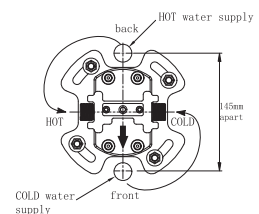
- Easy to clean TPR nozzles
- Made from SS316 lead free stainless steel for outdoor use



IMPORTANT: This guide includes 2 installation methods, plumbed and non-plumbed. Please ensure you are referring to the correct installation method below.

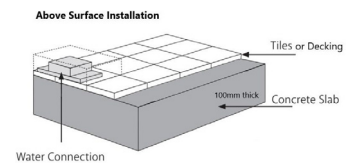
IMPORTANT REQUIREMENTS FOR PLUMBED INSTALLATION:

- For correct water installation the arrow on the Baseplate must point to the front.
- Hot water supply must be at the back of the Baseplate and Cold water supply at the front.
- Width between the centre of the hot and cold water supply outlets must be 145mm.
- The 1/2" BSPP water supply outlet threads must sit approx. 5mm out of the finished surface.
Note: If the thread is sitting too high out of the surface, it may hinder the top support plate from sitting flush on top of the base plate.



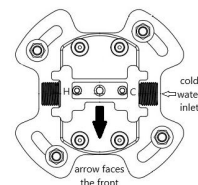
IMPORTANT SURFACE PREPARATION REQUIREMENTS FOR PLUMBED AND NON-PLUMBED INSTALLATION:

- This product is to be installed above the surface.
- The installation area must be stable and level.
- We recommend installing the shower onto a concrete surface of at least a 100mm thick slab, with the structure being able to support the weight and height of the 2.5m rail.
- For plumbed installations, the water supply pipes must be pre-installed before the concrete slab is formed.



IMPORTANT REQUIREMENTS FOR NON-PLUMBED INSTALLATION (OUTDOOR HOSE):

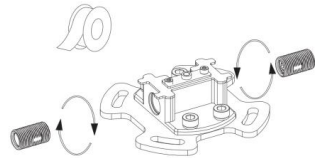
- For correct water installation the arrow on the baseplate must point to the front.
- Cold water supply only. Water Inlet at the right side of the base plate only.
- Additional product to purchase for non-plumbed installation - 455190-CP Outdoor Hose Connection Kit (includes cover plate with hose hole, and outdoor water inlets for hose connection)



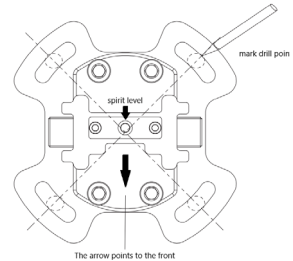
Plumbed Installation

IMPORTANT: Do not commence plumbing construction work for this product until you have consulted with the plumbing installer of this product. They must understand the correct surface structure and plumbing requirements that are needed to be able to correctly install this shower.

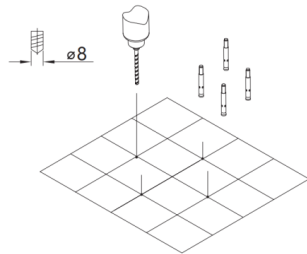
1. Wrap plumbers' tape around both ends of the water inlet connector threads and screw them into the hot and cold inlets of the baseplate with the hex hole end facing outwards. Tighten with a 10mm Allen key. Note: Both connector threads have dual check valves for back flow prevention.



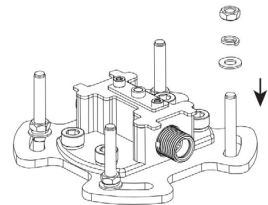
2. Make sure the arrow on the base plate is pointing to the front. Mark the pre-drilling hole positions for the base plate with a pencil on the mounting surface. Use the inbuilt Spirit Level on the base plate to ensure it is level on the surface.



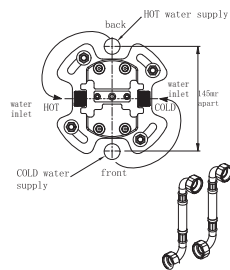
3. Drill Ø8mm holes at the marked points, 60mm depth into the surface. Push the 4 x 117mm anchor bolts into the drilled holes.



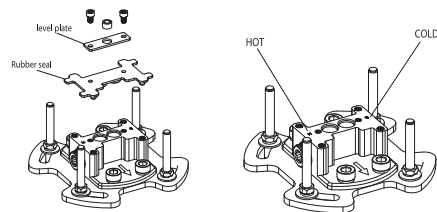
4. Put the base plate over the anchor bolt threads and install the flat washer, spring washer, and bolts onto each thread. Screw the bolts down loosely (do not tighten yet). Observe the gradient in the spirit level to adjust the level of the base plate. If required use the extra 80mm anchor bolts supplied to further secure the base plate to the surface.



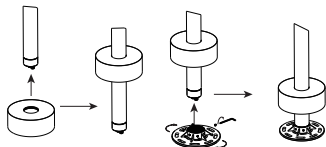
5. Connect the two flexible hoses to the Hot and Cold water inlets on the base plate first. Connect the other end of the hose to the water supply outlets, connect cold and hot correctly. Turn on the water supply and test for leakages, tighten hoses if necessary. The next step can be implemented only if there is no leakage.



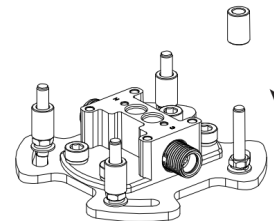
6. Remove the Level plate and the rubber seal with an Allen key. Check the Hot and Cold connections are correct.



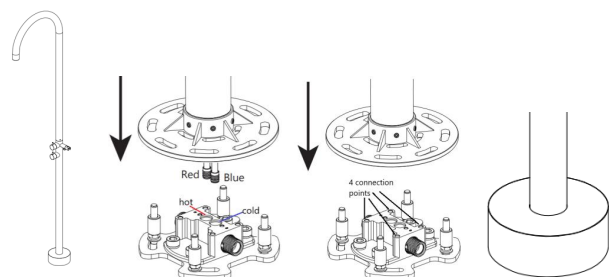
7. **IMPORTANT:** Install the cover plate onto the lower section of the rail. Screw the top support plate onto the thread on the bottom of the rail until it is flush with the rail and no thread can be seen. Remove the grub screws from the support plate with the Allen key. *For Non-Plumbed installation use the cover plate with the hole cut out for the outdoor hose connection.



8. Put the 4 spacers onto the anchor bolts on the base plate.



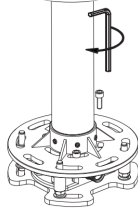
9. The mixer handles must be positioned to face the front of the Shower rail. Lubricate the O-rings on the Hot and Cold Shower Rods thoroughly to make the fitting easier and prevent damage. Put the lower shower rail with the fixed support plate onto the base plate and carefully push the shower rods into the base plate - red rod (hot water) into H and blue rod (cold water) into C. Check the support plate sits flush on top of the base plate. Check that the 4 connection points can be easily accessed to screw the 4 hexagon screws through the support plate into the baseplate. **IMPORTANT:** Test fit the cover plate by sliding it down over the base plate. Adjust if needed.



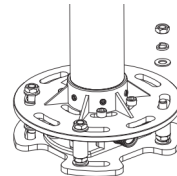
Plumbed Installation (cont.)

IMPORTANT: Do not commence plumbing construction work for this product until you have consulted with the plumbing installer of this product. They must understand the correct surface structure and plumbing requirements that are needed to be able to correctly install this shower.

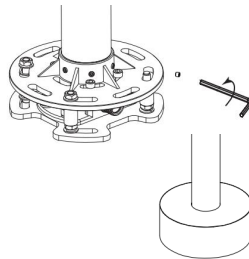
- 10.** Secure the support plate to the base plate by screwing the 4 x hexagon screws with a spring washer and flat washer through the support plate into the connection point holes in the base plate. Check the support plate sits flush against the baseplate.



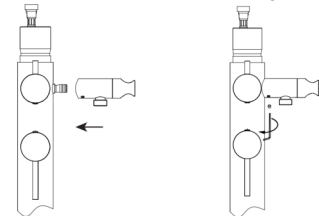
- 11.** Install the 4 nuts with flat washer and spring washer onto the top of each thread of the 4 anchor bolts. Firmly tighten the nuts to secure the support plate and base plate together. Tighten the 4 nuts at the bottom of the base plate to firmly secure the base plate to the surface.



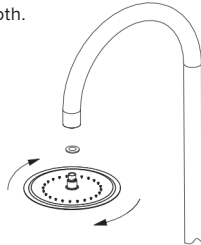
- 12.** Reinsert the 6 x grub screws back into the lower shower rail and tighten with the Allen key. Slide the cover plate down to cover the base plate.



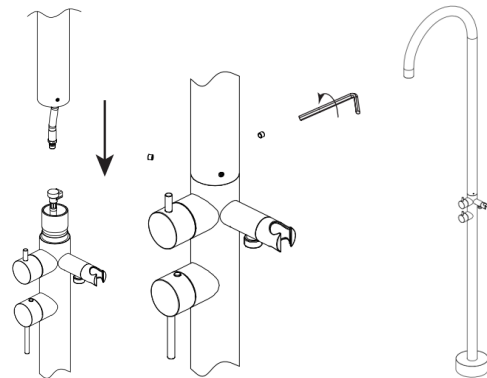
- 13.** Install the hand shower holder onto the rail and fasten the 2 grub screws.



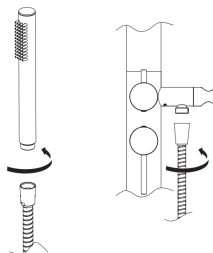
- 14.** Install the shower head to the upper shower rail and clean it with a soft cloth.



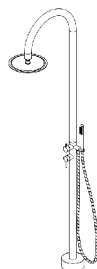
- 15.** To connect the upper shower rail to the lower shower rail first connect the two hoses together, the connection is in place if you hear a "click". Adjust the direction of the shower rail to face the front in line with the mixers. Secure the 2 rails together by tightening the 3 grub screws at the connection point with an Allen key.



- 16.** Connect one end of the shower hose to the shower holder and the other end to the hand shower, then put the hand shower into the shower holder.



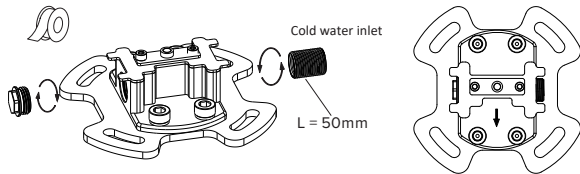
- 17.** Regularly check all fittings and connections to ensure they remain tight and leak-free. Perform periodic maintenance to clean the shower and descale the showerhead when necessary.



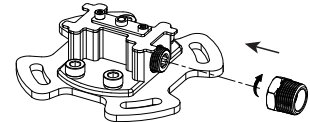
Non-Plumbed Installation

IMPORTANT: Do not commence plumbing construction work for this product until you have consulted with the plumbing installer of this product. They must understand the correct surface structure and plumbing requirements that are needed to be able to correctly install this shower.

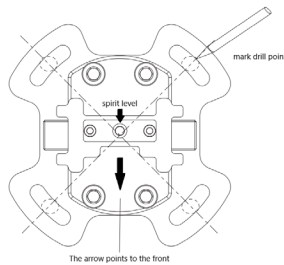
1. Screw the brass Plug into the Hot Water inlet on the left side of the base plate.



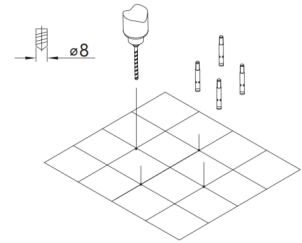
2. Wrap plumbers' tape around both ends of the cold water inlet connector thread and screw it into the cold water inlet of the base plate with the hex hole end facing outwards. Tighten with a 10mm Allen key. Screw the Water Inlet BSP 3/4 Hose Connector onto the cold water connector thread, ready for the outdoor hose connection. Note: The connector thread has a dual check valve for back flow prevention.



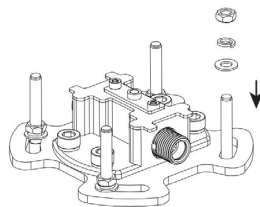
3. Make sure the arrow on the base plate is pointing to the front. Mark the pre-drilling hole positions for the base plate with a pencil on the mounting surface. Use the inbuilt Spirit Level on the base plate to ensure it is level on the surface.



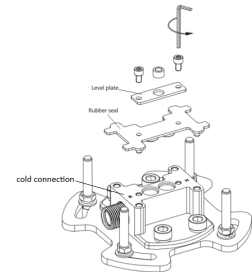
4. Drill Ø8mm holes at the marked points, 60mm depth into the surface. Push the 4 x 117mm anchor bolts into the drilled holes.



5. Put the base plate over the anchor bolt threads and install the flat washer, spring washer, and bolts onto each thread. Screw the bolts down loosely (do not tighten yet). Observe the gradient in the spirit level to adjust the level of the base plate. If required use the extra 80mm anchor bolts supplied to further secure the base plate to the surface.

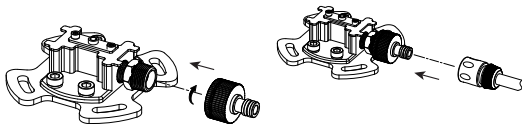


6. Remove the Level plate and the rubber seal with an Allen key. Confirm that the water supply is connected into the cold connection on the baseplate.

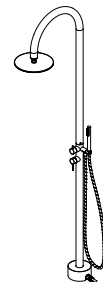


FOLLOW STEPS 7-16 OF THE PLUMBED INSTALLATION THEN COMPLETE STEPS 17 & 18 BELOW

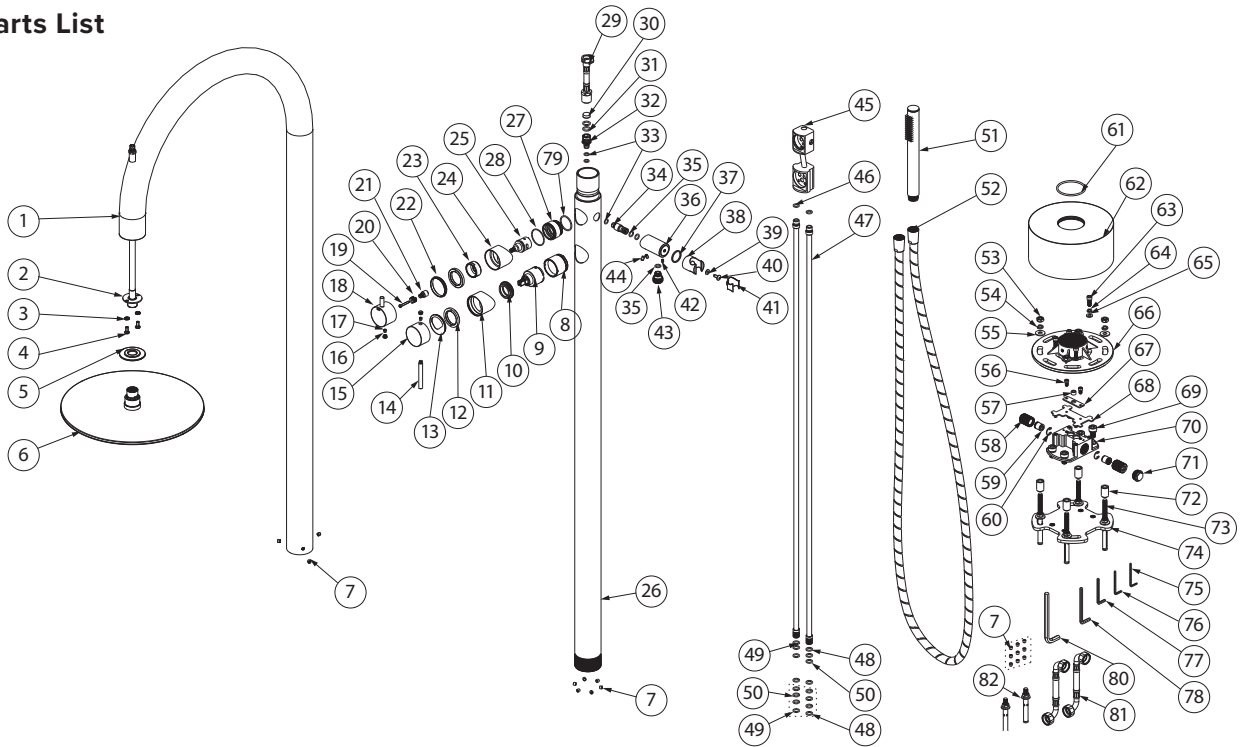
17. Screw the outdoor hose connection onto the Water Inlet BSP 3/4 Hose Connector. Then attach the hose connector.



18. Regularly check all fittings and connections to ensure they remain tight and leak-free. Perform periodic maintenance to clean the shower and descale the showerhead when necessary.



Parts List



1	Upper shower rail	29	Shower hose	57	Spirit level
2	Shower hose	30	Flow controller	58	Water inlet thread
3	Washer	31	O-ring	59	Check valve
4	Screw	32	Connector	60	Ring
5	Cover Plate	33	O-ring	61	O-ring
6	Shower head	34	Connector	62	Cover plate
7	Screw	35	O-ring	63	Screw
8	Sleeve	36	Bracket body	64	Washer
9	Mixer cartridge	37	Washer	65	Washer
10	Cover plate	38	Holder	66	Top base plate
11	Cover	39	Washer	67	Fixed plate
12	Cover plate	40	Screw	68	Seal
13	Cover plate	41	Plastic sleeve	69	Screw
14	Handle pin lever	42	Screw	70	Base plate
15	Handle	43	Connector	71	Plug
16	Button	44	Screw	72	Sleeve
17	Screw	45	Cartridge body	73	Screw
18	Handle	46	O-ring	74	Bottom base plate
19	Screw	47	Water inlet	75	Allen key
20	Connector	48	O-ring	76	Allen key
21	Connector	49	O-ring	77	Allen key
22	Washer	50	O-ring	78	Allen key
23	Cover plate	51	Hand shower	79	O-ring
24	Cover	52	Shower hose	80	Allen key
25	Diverter cartridge	53	Screw	81	PEX hoses
26	Lower shower rail	54	Washer	82	Screw
27	Sleeve	55	Washer		
28	O-ring	56	Screw		

Specifications

Please refer to fienza.com.au for the latest product specifications before installing.

Operating Pressure	Min: 150 kPa / 1.5 bar Max: 500 kPa / 5 bar Optimum: 150 kPa / 1.5 bar - 500 kPa / 5 bar Installation of pressure limiting valve recommended if supply exceeds 500kPa
Operating Temperature	Hot: Max 80°C Cold: Min. 5°C
Inlet Connections	1/2" BSPP
Suitable Hot Water Units	Storage tank and continuous flow only. Not suitable for gravity feed.
WELS Rating	WELS 3 Star rated, 9L/min (overhead & handheld)

Installation / Watermark Scope of Use

- Before installation, turn off the water supply. We recommend fitting isolation valves to both the hot and cold-water supply.
- Some showers may not provide an effective shower when used with gravity fed heated water systems or where pressures are less than 150kPa at the outlet. Additionally, showers with flow rates of less than 9L/min may not allow the following to function correctly:
 - Some instantaneous water heaters
 - Some tempering valves
 - Some thermostatic mixing valves
- Some shower heads only operate correctly when hot and cold water supplies are both mains pressure.
- When water pressure is in excess of 500kPa a pressure limiting device is required.
- This product is with compliance to the Lead Free requirements of the National Construction Code Volume Three.



Warranty

Please refer to fienza.com.au/warranty for the latest information.

Residential Warranty - Applies to domestic uses and applications of Fienza® products, such as private dwellings and retirement villages.

Commercial Warranty - Applies to commercial uses and applications of Fienza® products, including, but not limited to: commercial food premises such as restaurants; commercial accommodation such as hotels; hospitals and healthcare facilities; public amenities; and industrial, laboratory and manufacturing facilities.

Australian Consumer Law

Our products come with guarantees that cannot be excluded under the Australian Consumer Law. You are entitled to a replacement or refund for a major failure upon inspection by an authorised representative where a product is found to be defective in construction, material or assembly. You are also entitled to have the goods repaired or replaced if they fail to be of acceptable quality and the failure does not amount to a major failure, free of charge.

Warranty Conditions

Installation has been carried out by a licensed plumber in accordance with AS/NZS 3500 and all applicable local regulations and plumbing codes. All maintenance and adjustments to the product after the installation have been carried out by a licensed plumber. Cleaning and care instructions detailed in this document have been strictly adhered to. Proof of purchase is required for warranty claims.

Warranty Limitations

To the extent permitted under the Trade Practices Act and other relevant legislation, Fienza's liability is limited to:

- The cost of replacing the goods, or
- The cost of obtaining equivalent goods, or
- The cost of having the goods repaired
- Fienza is not responsible for any lack of operation or performance of goods (or any loss or damage) where goods are used or adapted for use with other goods not supplied by Fienza.
- It is the responsibility of the customer and installer before installation to ensure that all components are correct and free of obvious visible faults.
- Fienza is not responsible for the labour and rectification costs incurred in the above circumstance.

Conditions for On-Site Warranty Service Calls

Fienza will charge a service fee for each visit to an installation by its technician where it is determined that the fault is due to poorly executed or unlicensed installation work or where the product is not a genuine Fienza product or where the product is outside the warranty period. This may be paid in advance by credit card over the phone to a Fienza technician attending the site and will be refunded if the Fienza product is found to be at fault.

PLEASE LEAVE THIS MANUAL WITH THE END USER

For warranty support, please contact Fienza

15 Walter Cres, Lawnton QLD 4501 PO Box 5381, Brendale QLD 4500

P 07 3490 6700 F 07 3490 6719 E help@fienza.com.au ABN 76 136 411 311