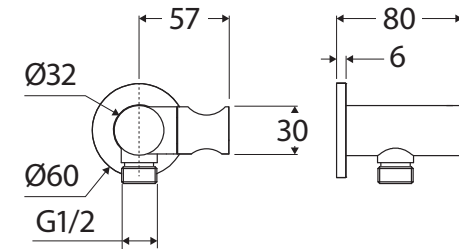


# Universal HAND SHOWER BRACKET & HOSE ROUND PLATE

## Features

- Pair our Universal hand shower bracket and hose with a hand piece of your choice to create a custom design (hand pieces sold separately)
- Tilt function for hand shower bracket
- All-in-one water inlet and mounting bracket
- Made from solid brass
- 1.5 metre stainless steel flexible hose (PVC hose for matte black model 433200B)



## Available in



Electroplated  
Chrome  
**433200**



Electroplated  
Matte White  
**433200MW**



Electroplated  
Matte Black  
**433200B**



PVD  
Brushed Nickel  
**433200BN**



PVD  
Gun Metal  
**433200GM**



PVD  
Brushed Copper  
**433200CO**



PVD  
Urban Brass  
**433200UB**

## Cleaning & Care

- Regularly clean with mild soapy water using a microfibre cloth.
- In highly polluted or coastal locations, we recommend cleaning 2-3 times per week.
- Do not use harsh detergents, bleach, cream cleaners or citrus based cleaners. These substances are abrasive and will damage the surface.
- Do not use undue pressure and wipe in one direction only.

We aim to ensure that specifications are correct at the time of publication. All measurements are shown in millimetres. Always use measurements of actual product received for final specification as the technical drawing may contain differences. Due to printing limitations, physical colour may vary from the image shown. Fienza reserves the right to make modifications without prior notice.