

# Sona

## Back To Wall Smart Toilet

### KS100



Jet Tornado  
Flush



Automatic  
Open/Close



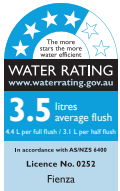
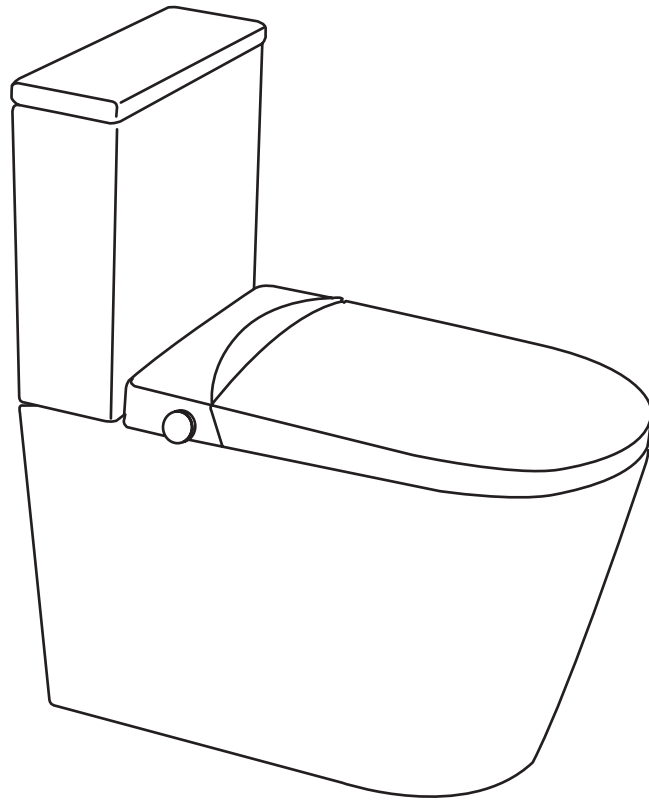
LED Night  
Light



Bidet  
Functions

WELS 4 Star - 4.4/3.1L (3.5L avg/flush)

- Front, Rear and Massage wash functions
- Automatic flush
- Automatic seat & lid
- Full function remote control included, with wall mounted bracket
- Heated seat, water and air drying temperature control
- Built in overflow protection and dual check valves
- Back-to-wall design for easier upgrading of your existing BTW toilet
- Available as P-Trap or S-Trap
- IP rating: IP44



**BEFORE INSTALLATION:** CHECK ALL PARTS OF PRODUCT THOROUGHLY. INSTALLATION IS ACCEPTANCE OF GOODS AND WILL VOID WARRANTY. MIRRORS ARE FRAGILE. TAKE EXTRA CARE WHILE TRANSPORTING AND HANDLING GOODS.

The SONA Jet Flush Back to Wall Smart Toilet consists of a toilet pan, an integrated smart toilet seat and a bottom inlet cistern.

### Pre-installation requirements:

The installation of your SONA smart toilet requires both plumbing and electrical work. Consult with your licensed plumber and electrician to determine the most suitable installation.

In addition to the standard water supply, the SONA smart toilet also requires 220-240 volt power. The SONA smart toilet power connection can be either concealed (permanently wired) or exposed wiring (plugged into a standard Australian 220-240 volt power point). To ensure a smooth installation, determine where the power and water feeds will be located. They can be located either behind the pan for a seamless installation or adjacent to the pan using the access holes located on each side of the toilet pan. Arrange for the power and water services to be installed at the desired location for your specific installation.

The SONA Smart Toilet features dual check valves and an air-gap in the seat assembly that complies with AS2845.2 - Water Supply Backflow Prevention. Check local regulations to confirm if a RPZ valve is required as part of your installation.

### Important:

- For concealed wiring (permanently wired) installations, a provision must be made for a switched power supply feed to the rear of the toilet pan. A remote switch is required to cut power to the toilet and to hard reset the smart seat if required.
- For exposed wiring (plug-in) installation, a switched power point is required within 1 meter of the preferred toilet mounting position.
- Ensure all water connections are tight and leak free.

All installations should be carried out by a qualified tradesman in compliance with the National Plumbing & Drainage Code and any State or Local Authority Regulations, in accordance with AS/NZS 3500 series of standards and AS/NZS 6400. All measurements are in millimetres and are subject to change without notice. For ceramic products, please allow +/- 10 mm tolerance for manufacturing variance. Please refer to [fienza.com.au](http://fienza.com.au) for the latest product specification.

**Cistern installation:**

1. Tighten the cistern basket nut and then fit the rubber donut to the cistern outlet.
2. Tighten the water inlet pipe and cable feed pipe fittings on the bottom of the cistern.
3. Attach cistern retaining nuts into opening in the pan.
4. Sit the cistern on the pan, feeding the cable for the auto flush system through the feed pipe in the cistern and into the pan. Connect the cable from the smart seat assembly to the wiring inside the Cistern.
5. Fasten the cistern to the pan using two pan bolts and tighten.

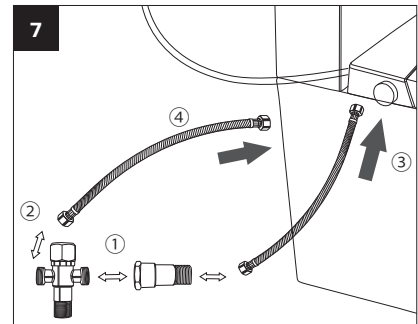
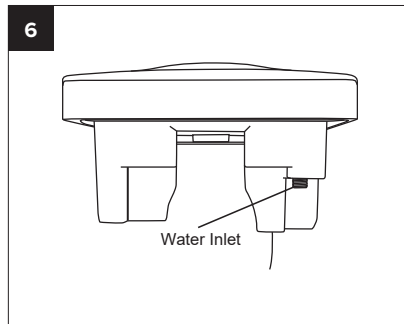
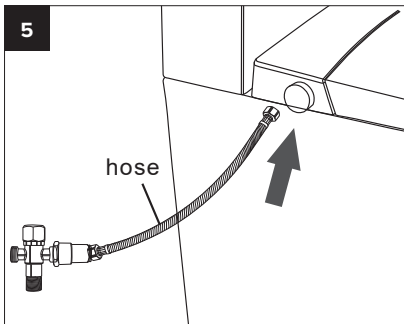
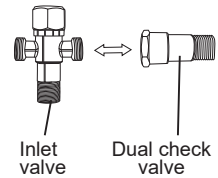
**Connecting the pan to water:**

Note: the SONA smart toilet is left or right bottom inlet ONLY.

1. Turn water supply off.
2. Connect the existing cistern stop, the supplied inlet valve using a PEX hose. Ensure the inlet valve is closed.
3. Connect the dual check valve assembly to the inlet valve and tighten.

**IMPORTANT: IF THE DUAL CHECK VALVE IS MISSING, DO NOT INSTALL AND ADVISE THE PLACE OF PURCHASE**

4. Connect one G½" PEX hose to the dual check valve assembly and tighten.
5. Connect the other end to the smart seat water reservoir inlet threaded connection (see diagram) and tighten.
6. Connect the other supplied G½" PEX hose to the remaining outlet on the inlet valve and tighten.
7. Connect the other end of this hose to the threaded water inlet on the bottom of the cistern and tighten.
8. Turn on the water supply, open the inlet valve and test all water connections for leaks.



**Connecting toilet to power:**

NOTE: This appliance MUST be installed by a licensed electrician, be protected by a suitably rated RCD circuit breaker and installed in accordance with the requirement for wet areas. All installations are to be performed in accordance with regulations in AS/NZ 3000. The power point type and location must also comply to the requirements of AS/NZS 3000.

1. CONCEALED WIRING (hard wired): Provisions must be made for a switched power supply to feed through the wall surface.
2. EXPOSED WIRING (plug-in): A switched power point is required within 1 meter of the preferred toilet mounting position.

**Concealed Wiring Connection:**

1. A switched power supply is required to power off and to hard reset for the SONA smart toilet.
2. Determine the power wire feed location behind the pan. Ensure you allow for the water supply and P-trap / S-trap waste pipes.
3. Mark the position and using a suitable drill bit, drill a hole for the power wiring behind the toilet pan.
4. Connect the smart toilet wiring to power. Allow sufficient extra cable behind the pan to be able to remove and refit the smart toilet into position.
5. Turn on and test the smart toilet for any faults with operation (see user manual).

### Exposed Wiring Connection:

1. Determine the location of the power point and remove the appropriate pan side hole cover cap. If the water feed is using the access hole on one side of the pan, use the access hole on the opposite side of the pan for power.
2. On the smart seat wiring, disconnect the round cable connector and feed the wiring through the side of the pan.
3. Reconnect the round cable connector and tighten.
4. Plug the power cable into the power point and turn on the power.
5. Test the smart toilet for any faults with operation (see user manual).

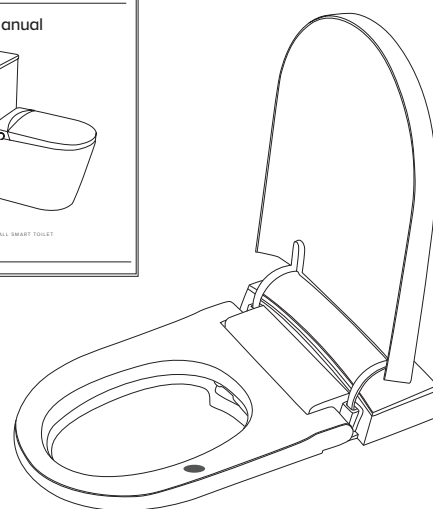
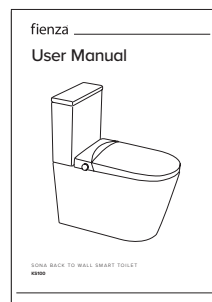
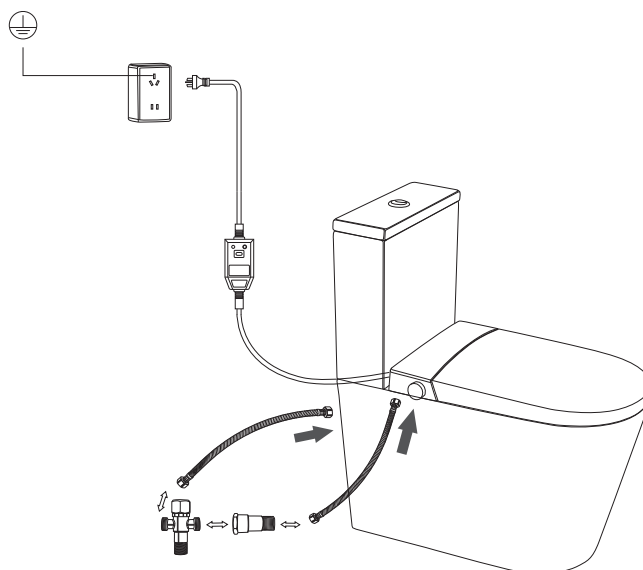
### Connecting the pan to the waste pipe:

1. Ensure all the water feed connections are connected and tight.
2. Ensure the power supply suitable to your installation has been connected and tested.
3. For S-Trap connections, the S-Trap pipe should be put into position and cut to suit your set out, then attached to the wall using the screw, bolt and plate provided with the S-Trap pipe.
4. Now push the pan hard into position to ensure the ceramic outlet is pushed into the S-Trap pipe by approximately 50mm. This is so the rubber seal inside the S-Trap pipe gets a good seal to stop leaking.

**PLEASE DO NOT SILICONE PAN TO FLOOR UNTIL TOILET HAS BEEN CHECKED FOR LEAKS.**

### Testing the toilet:

1. Once all water and waste connections are complete and the toilet has been checked for leaks, the toilet can be tested.
2. Ensure the toilet is connected to power and turn the power on.
3. The side knob will illuminate on initial power up and the LED digital display will illuminate.
4. Cover the toilet pan opening with clear, thin film to prevent water from spraying outside the toilet during testing.
5. Place one hand and apply slight pressure on the toilet seat where the sticker is located.
6. Using the remote control, run through the various toilet functions to confirm the unit is working. (Refer to the SONA Smart Toilet User Guide for toilet operation and remote



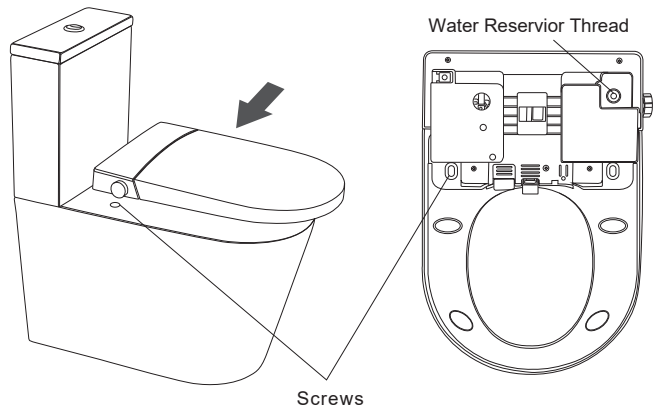
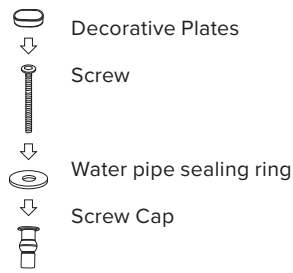
control instructions).

### SONA Smart Toilet Seat Installation

Note: The toilet pan will come fitted with the seat in the box. Please use the below instructions if the seat needs to be uninstalled/reinstalled.

#### Seat Removal:

1. Power off the smart toilet – if possible disconnect from power supply
2. Remove the decorative screw cover plates over the mounting screw recesses on the top of the seat (beneath the seat cover and seat).
3. Use a screwdriver to loosen and remove the two seat mounting screws.
4. Remove the two flat washers from the seat mounting hole openings.
5. Disconnect the PEX hose from the threaded water reservoir inlet on the bottom of the seat assembly
6. Disconnect the wiring from the smart toilet seat through the top of the cistern and pull down into the pan below the cistern.
7. The seat can now be removed from the pan.



### SONA Smart Toilet Parts List

Item Code	Description
KS100-PS	Toilet Pan and Smart Seat
KS100-C	Cistern
KS100-SEAT	Smart Seat Assembly
KS100-FLUSH	Auto Flush Outlet Valve
KS100-REMOTE	Remote Control
KS100-NOZZLE	Spray Nozzle Head
X022G	S-Trap 90-160 Connector Pipe
X011B	S-Trap 160-220 Connector Pipe

All installations should be carried out by a qualified tradesman in compliance with the National Plumbing & Drainage Code and any State or Local Authority Regulations, in accordance with AS/NZS 3500 series of standards and AS/NZA 6400. All measurements are in millimetres and are subject to change without notice. For ceramic products, please allow +/- 10 mm tolerance for manufacturing variance. Please refer to [fienza.com.au](http://fienza.com.au) for the latest product specification.

### Australian Consumer Law

Our goods come with guarantees that cannot be excluded under the Australian Consumer Law. You are entitled to a replacement or refund for a major failure and compensation for any other reasonably foreseeable loss or damage. You are also entitled to have the goods repaired or replaced if the goods fail to be of acceptable quality and the failure does not amount to a major failure.

Fienza Pty Ltd reserves the right to make changes in product characteristics, packaging or availability at any time without notice. Please visit [fienza.com.au](http://fienza.com.au) for the latest information.



Full Warranty Terms

### Warranty Conditions

- Installation has been carried out by a licensed tradesperson in accordance with all applicable Building, Plumbing and Electrical codes, and Federal, State, or Local Government Regulations in accordance with AS/NZS 3500 Plumbing & Drainage, AS/NZS 6400 Water Efficient Products, and AS/NZS 3000 Electrical standards for any installations to which these standards apply.
- All maintenance and adjustments to the product after the installation have been carried out by a licensed tradesperson.
- All care and cleaning instructions have been adhered to as prescribed.
- All goods of substandard quality manufacture (excluding imperfections permitted within AS1976 - Vitreous China used in Sanitary Applications) will be credited or replaced by Fienza when advised within the warranty period, subject to prior inspection and agreement.
- Proof of purchase is required for warranty claims.

### Warranty Limitations

To the extent permitted under the Trade Practices Act and other relevant legislation, Fienza's liability is limited to:

- The cost of replacing the goods, or
- The cost of obtaining equivalent goods, or
- The cost of having the goods repaired
- Fienza is not responsible for any lack of operation or performance of goods (or any loss or damage) where goods are used or adapted for a with other goods not supplied by Fienza.
- It is the responsibility of the customer and installer before installation to ensure are correct and free of obvious visible faults.
- Fienza is not responsible for the labour and rectification costs incurred in the above circumstance.

### Conditions for On-Site Warranty Service Calls

Fienza will charge a service fee for each visit to an installation by its technician where it is determined that the fault is due to poorly executed or unlicensed installation work or where the product is not a genuine Fienza product or where the product is outside the warranty period. This may be paid in advance by credit card over the phone to a Fienza technician attending the site and will be refunded if the Fienza product is found to be at fault.

### Cleaning & Operation

- Regularly clean with mild soapy water using a microfibre cloth.
- In highly polluted or coastal locations, we recommend cleaning 2-3 times per week.
- Do not use harsh detergents, bleach, cream cleaners or citrus based cleaners. These substances are abrasive and will damage the surface.
- Do not use undue pressure and wipe in one direction only.

---

### PLEASE LEAVE THIS MANUAL WITH THE END USER

For warranty support, please contact Fienza  
15 Walter Cres, Lawnton QLD 4501 | PO Box 5381, Brendale QLD 4500  
P 07 3490 6700 F 07 3490 6719 E [help@fienza.com.au](mailto:help@fienza.com.au) ABN 76 136 411 311

**THIS PAGE IS INTENTIONALLY LEFT BLANK**

All installations should be carried out by a qualified tradesman in compliance with the National Plumbing & Drainage Code and any State or Local Authority Regulations, in accordance with AS/NZS 3500 series of standards and AS/NZS 6400. All measurements are in millimetres and are subject to change without notice. For ceramic products, please allow +/- 10 mm tolerance for manufacturing variance. Please refer to [fienza.com.au](https://fienza.com.au) for the latest product specification.