

Warranties

Residential: Applies to domestic uses and applications of Fienza® products, such as private dwellings and retirement villages.

Commercial: Applies to commercial uses and applications of Fienza® products, including, but not limited to: commercial food premises such as restaurants; commercial accommodation such as hotels; hospitals and healthcare facilities; public amenities; and industrial, laboratory and manufacturing facilities.

Product Component	Residential	Commercial
Ceramic Disc Cartridges	LIFETIME replacement parts or product, 15 years labour	15 years replacement parts or product, 5 years labour
Mixer (Structure Only)	LIFETIME replacement parts or product, 1 year labour	7 years replacement parts or product, 1 year labour
Finishes - Chrome	LIFETIME replacement parts or product, 1 year labour	7 years replacement parts or product, 1 year labour
Finishes - PVD	10 years replacement parts or product, 1 year labour	1 year replacement parts or product, 1 year labour
Finishes - Electroplated	5 years replacement parts or product, 1 year labour	1 year replacement parts or product, 1 year labour
Accessories & Spare Parts	1 year replacement parts or product	1 year replacement parts or product

NOTE: Excludes parts subject to general wear and tear such as O-rings, washers and jumper valves.

Warranty Conditions

- Installation has been carried out by a licensed tradesperson in accordance with AS/NZS 3500 and all applicable local regulations and plumbing codes.
- All maintenance and adjustments to the product after the installation have been carried out by a licensed tradesperson.
- All care and cleaning instructions have been adhered to as prescribed.
- Proof of purchase is required for warranty claims.

Warranty Limitations

To the extent permitted under the Trade Practices Act and other relevant legislation, Fienza's liability is limited to: the cost of replacing the goods; or, the cost of obtaining equivalent goods; or, the cost of having the goods repaired. Fienza is not responsible for any lack of operation or performance of goods (or any loss or damage) where goods are used or adapted for use with other goods not supplied by Fienza. It is the responsibility of the customer and installer before installation to ensure that all components are correct and free of obvious visible faults. Fienza is not responsible for the labour and rectification costs incurred in the above circumstance.

Conditions for On-Site Warranty Service Calls

Fienza will charge a service fee for each visit to an installation by its technician where it is determined that the fault is due to poorly executed or unlicensed installation, where the product is not a genuine Fienza product or where the product is outside the warranty period. This may be paid in advance by credit card over the phone to a Fienza technician attending the site and will be refunded if the Fienza product is found to be at fault.

PLEASE LEAVE THIS MANUAL WITH THE END USER

For more information, contact us or visit our website:
(07) 3490 6700 | help@fienza.com.au | fienza.com.au

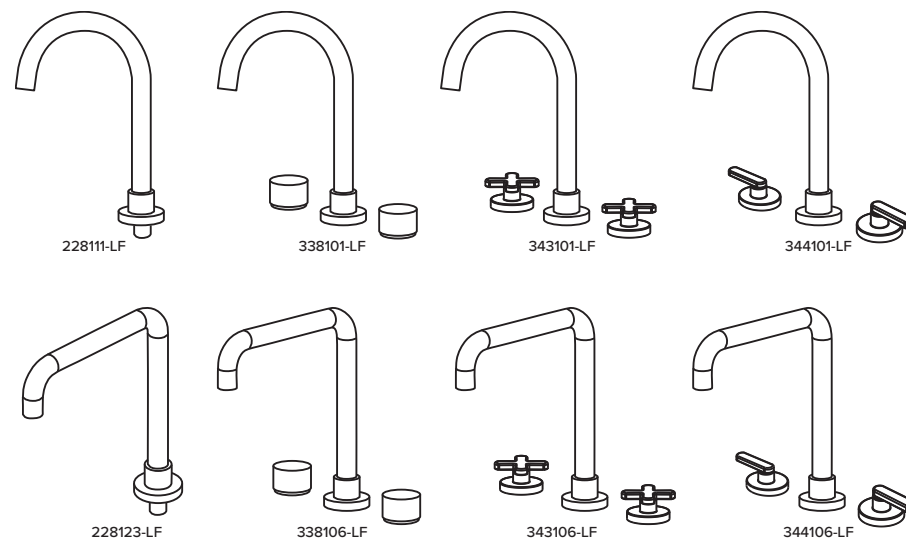
Updated: 01/05/2025

fienza®

INSTALLATION GUIDE

Kaya

HOB-MOUNTED SPOUT & SETS



For use with:

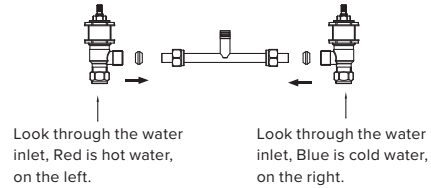
228111-LF	Kaya Hob-Mounted Basin/Bath Spout
228123-LF	Kaya Squareline Hob-Mounted Basin/Sink Spout
338101-LF	Kaya Basin Tap Set with Round Taps
343101-LF	Kaya Basin Tap Set with Cross Taps
344101-LF	Kaya Basin Tap Set with Lever Taps
338106-LF	Kaya Squareline Hob-Mounted Basin/Sink Set with Round Taps
343106-LF	Kaya Squareline Hob-Mounted Basin/Sink Set with Cross Taps
344106-LF	Kaya Squareline Hob-Mounted Basin/Sink Set with Lever Taps
230026-LF	Basin Taps Hot/Cold Breech Set for Bench Taps/Levers (Contra Rotating)

The 230026-LF Universal Basin Taps Hot and Cold Breech Set for Bench Taps is contra rotating and is only suitable for a maximum installation depth of 25mm.

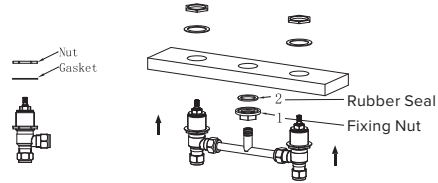
Installation

IMPORTANT: Before commencing installation, turn off the water supply. While not essential, we recommend fitting isolation valves to both the hot and cold-water supply. Seal product threads with appropriate sealant.

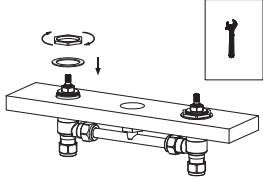
- 1.** Connect the breech piece outlet to the cartridge assemblies. Centre the breech piece outlet into the spout hole in the bench top.



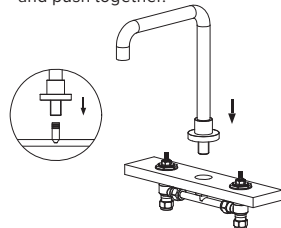
- 2.** Remove upper nuts and gaskets from the top of the cartridge assembly. Put the rubber seal and spout fixing nut onto the breech piece pipe. Adjust the nuts according to the thickness of the bench top (maximum depth is 25mm), the cartridge assembly is installed together in the bench top.



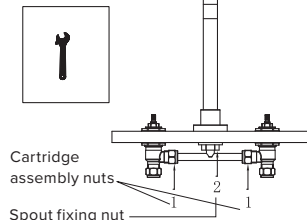
- 3.** Tighten the upper nuts with a spanner. Test fit the handles to ensure the cartridge assembly is at the correct height for the handles to fit nicely on the bench top. Adjust as necessary.



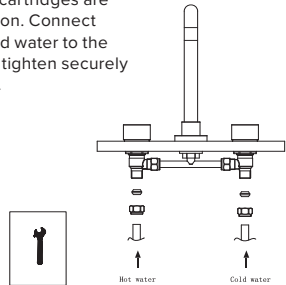
- 4.** Place the dress ring on the base of the spout. Align the spout inlet hole with the breech piece outlet and push together.



- 5.** Using a spanner, tighten the 2 cartridge assembly nuts to the breech piece, and tighten the spout fixing nut to the bench top.

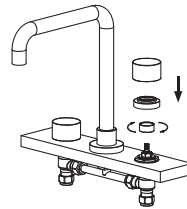
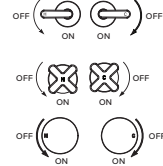


- 6.** Make sure the cartridges are in the off position. Connect the hot and cold water to the cartridges and tighten securely with a spanner.



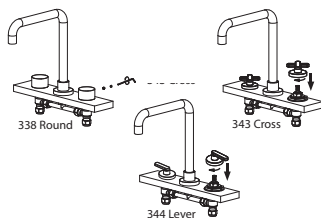
- 7.** Install the handles according to the diagrams below. Test the function is correct and both handles are contra rotating.

Contra rotating handles

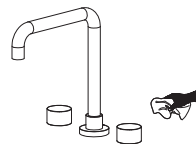


- 8. Installing the handles**

338 Round – Secure the handles by tightening the grub screws and insert the silicone caps.
343 Cross & 344 Lever – Secure the Cross & Lever handles onto the spindle threads and turn the cover plate in a clockwise direction until the cover plate sits flush against the bench top. Test with water for leakages.



- 9.** Test for any leakages. Clean the product using a soft cloth and water.



Specifications

Please refer to fienza.com.au for the latest product specifications before installing.

Operating Pressure	Min: 150 kPa / 1.5 bar Max: 500 kPa / 5 bar Optimum: 350 kPa / 3.5 bar
Operating Temperature	Hot: Max 80°C Cold: Min. 5°C
Inlet Connections	1/2" BSPP
Suitable Hot Water Units	Storage tank and continuous flow only. Not suitable for gravity feed.
WELS Rating	WELS 5 Star rated, 5L/min (basin) - Squareline Spout WELS 5 Star rated, 6L/min (basin) - Hob Spout

Cleaning & Care

We recommend weekly cleaning with mild soapy water and a microfiber cloth. In highly polluted or coastal locations we recommend cleaning 2-3 times per week. Please note that colour tapware requires more frequent cleaning than chrome tapware.

- Never use harsh detergents, citrus-based cleaners or abrasive cleaners, as these will scratch the surface. Use of unsuitable cleaners may damage the surface and will not be covered by warranty.
- Where your tapware remains dry in use, a non-abrasive soft cloth can be used to remove surface dust.
- Use of wax-based furniture cream should be avoided as these can result in a build-up of deposits which could detract from the appearance.
- Do not use undue pressure and wipe in one direction only.

IMPORTANT: Please read all of the instructions before installation. Check goods thoroughly before installation. Installation of received goods that are damaged, warped or faulty will void warranty. Ensure all items meet your plumbing requirements. This product is pre-assembled. Do not disassemble, as this may void the warranty.

Watermark Scope of Use

- This product must be installed by a qualified licensed plumber in accordance with the National Construction Code Volume Three, AS/NZS 3500 and all applicable local regulations and plumbing codes.
- The product is intended for residential and commercial indoor use only.
- This product is manufactured to comply with the Lead Free requirements of the National Construction Code Volume Three.
- All pipe work must be thoroughly flushed prior to installation.
- Do not remove the ceramic cartridge from the mixer when installing.
- After installation all hoses and connections must be checked for leaks.
- It is the responsibility of the installer to ensure a waterproof seal is achieved between the product and mounting surface.
- The flow controller incorporated in the outlet must be re-tightened to prevent removal by hand.
- See below specifications for minimum and maximum operating pressures and temperature and other installation requirements.