

Warranties

Residential: Applies to domestic uses and applications of Fienza® products, such as private dwellings and retirement villages.

Commercial: Applies to commercial uses and applications of Fienza® products, including, but not limited to: commercial food premises such as restaurants; commercial accommodation such as hotels; hospitals and healthcare facilities; public amenities; and industrial, laboratory and manufacturing facilities.

Product Component	Residential	Commercial
Ceramic Disc Cartridges	LIFETIME replacement parts or product, 15 years labour	15 years replacement parts or product, 5 years labour
Mixer (Structure Only)	LIFETIME replacement parts or product, 1 year labour	7 years replacement parts or product, 1 year labour
Finishes - Chrome	LIFETIME replacement parts or product, 1 year labour	7 years replacement parts or product, 1 year labour
Finishes - PVD	10 years replacement parts or product, 1 year labour	1 year replacement parts or product, 1 year labour
Finishes - Electroplated	5 years replacement parts or product, 1 year labour	1 year replacement parts or product, 1 year labour
Accessories & Spare Parts	1 year replacement parts or product	1 year replacement parts or product

NOTE: Excludes parts subject to general wear and tear such as O-rings, washers and jumper valves.

Warranty Conditions

- Installation has been carried out by a licensed tradesperson in accordance with AS/NZS 3500 and all applicable local regulations and plumbing codes.
- All maintenance and adjustments to the product after the installation have been carried out by a licensed tradesperson.
- All care and cleaning instructions have been adhered to as prescribed.
- Proof of purchase is required for warranty claims.

Warranty Limitations

To the extent permitted under the Trade Practices Act and other relevant legislation, Fienza's liability is limited to: the cost of replacing the goods; or, the cost of obtaining equivalent goods; or, the cost of having the goods repaired. Fienza is not responsible for any lack of operation or performance of goods (or any loss or damage) where goods are used or adapted for use with other goods not supplied by Fienza. It is the responsibility of the customer and installer before installation to ensure that all components are correct and free of obvious visible faults. Fienza is not responsible for the labour and rectification costs incurred in the above circumstance.

Conditions for On-Site Warranty Service Calls

Fienza will charge a service fee for each visit to an installation by its technician where it is determined that the fault is due to poorly executed or unlicensed installation, where the product is not a genuine Fienza product or where the product is outside the warranty period. This may be paid in advance by credit card over the phone to a Fienza technician attending the site and will be refunded if the Fienza product is found to be at fault.

PLEASE LEAVE THIS MANUAL WITH THE END USER

For more information, contact us or visit our website:
(07) 3490 6700 | help@fienza.com.au | fienza.com.au

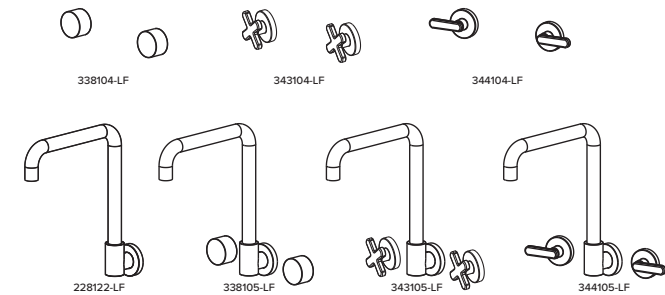
Updated: 01/05/2025

fienza®

INSTALLATION GUIDE

Kaya

SQUARELINE SPOUT & WALL TAP SETS



For use with:

338104-LF	Kaya Round Wall Taps
343104-LF	Kaya Cross Wall Taps
344104-LF	Kaya Lever Wall Taps
338105-LF	Kaya Squareline Wall Set , Round Taps
343105-LF	Kaya Squareline Wall Set , Cross Taps
344105-LF	Kaya Squareline Wall Set , Lever Taps
228122-LF	Kaya Squareline Wall Swivel Spout
230024-LF	Universal Wall Tap Hot/Cold Spindle Set (Contra Rotating)
230025-LF	Universal Wall Tap Hot/Cold Extended Spindle Set (Contra Rotating)

Specifications

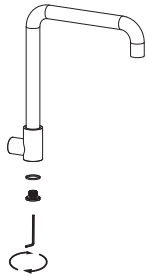
Please refer to fienza.com.au for the latest product specifications before installing.

Operating Pressure	Min: 150 kPa / 1.5 bar Max: 500 kPa / 5 bar Optimum: 350 kPa / 3.5 bar
Operating Temperature	Hot: Max 80°C Cold: Min. 5°C
Inlet Connections	1/2" BSPP
Suitable Hot Water Units	Storage tank and continuous flow only. Not suitable for gravity feed.
WELS Rating	WELS 5 Star rated, 5L/min when installed over basin

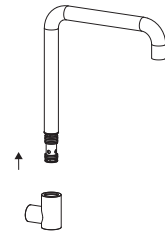
Wall Swivel Outlet Installation

IMPORTANT: Before commencing installation, turn off the water supply. While not essential, we recommend fitting isolation valves to both the hot and cold-water supply.

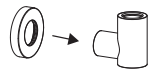
1. Loosen the hexagonal socket at the base of the inlet connector with an 8mm Allan Key. Remove the hexagonal socket and white plastic O-ring.



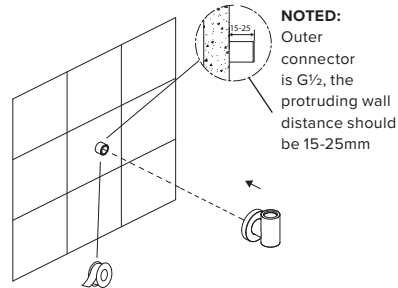
2. Remove the spout from the inlet connector.



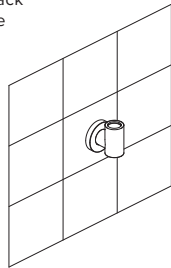
3. Add the cover plate to the inlet connector.



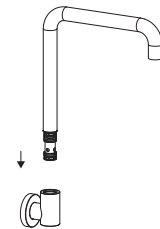
4. Wrap the water pipe with the appropriate thread tape and align the inlet connector with the water pipe. Rotate the inlet connector onto the water pipe until it is tight against the wall and at a vertical position.



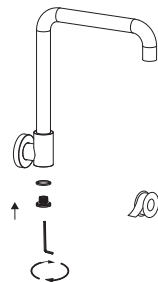
5. Slide the cover plate back until it is flat against the wall.



6. Reattach the spout to the top of the inlet connector.



7. Wrap the thread of the hexagon socket with thread tape and insert the white plastic O-ring onto the thread. Tighten the hexagonal socket at the bottom of the inlet connector with the 8mm Allan Key until tight and test swivel function. If too tight, adjust the socket. Test for any leakages and clean the product using a soft microfibre cloth.



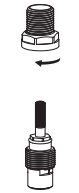
Spindle and Handle Installation

IMPORTANT: Before commencing installation, turn off the water supply. While not essential, we recommend fitting isolation valves to both the hot and cold-water supply.

1. Remove the plastic cap, brass locking nut and red fibre washer from the spindle.



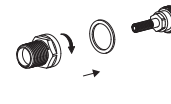
2. Rotate cartridges in the spindles to the off position.



3. Screw the spindles into the wall in the hot and cold water inlet pipes by hand and tighten until it reaches the seat. Do not over tighten the spindle, this will cause damage to the spindle. Then tighten with a spanner half turn only to lock the spindles into place.



4. Place the red fibre washer onto the spindle, screw on the locking nut and tighten with a spanner.

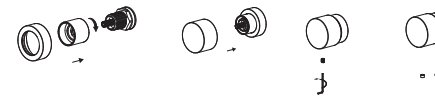


5. Before installing the handles, check that the spindles are in the off position. Test the position by installing the handles onto the spindle threads ensuring the H and C indicators are aligned and in a horizontal position with H (left) and C (right). If you need to adjust the position of the handles, use a spanner on the spindle locking nut to adjust to the correct position.



6. 338 Round Taps Handle Installation

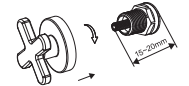
Install the cover sleeves by threading onto the cartridges. Push the cover plate over the installed sleeve firmly against the wall. Attach the round handle onto the spindle thread and tighten the grub screw from underneath the handle, add the silicone grub screw cover. Test with water for leakage.



343 Cross & 344 Lever Handle Installation

Secure the Cross & Lever handles onto the spindle threads and turn the cover plate in a clockwise direction until the cover plate sits flush against the wall. Test with water for leakages.

NOTED:
The cartridge wall distance should be 15-25mm



Watermark Scope of Use

- This product must be installed by a qualified licensed plumber in accordance with the National Construction Code Volume Three, AS/NZS 3500 and all applicable local regulations and plumbing codes.
- The product is intended for residential and commercial indoor use only.
- This product is manufactured to comply with the Lead Free requirements of the National Construction Code Volume Three.
- All pipe work must be thoroughly flushed prior to installation.
- Do not remove the ceramic cartridge from the mixer when installing.
- After installation all hoses and connections must be checked for leaks.
- It is the responsibility of the installer to ensure a waterproof seal is achieved between the product and mounting surface.
- The flow controller incorporated in the outlet must be re-tightened to prevent removal by hand.
- See below specifications for minimum and maximum operating pressures and temperature and other installation requirements.