

Axle®

BASIN/BATH WALL MIXER SET

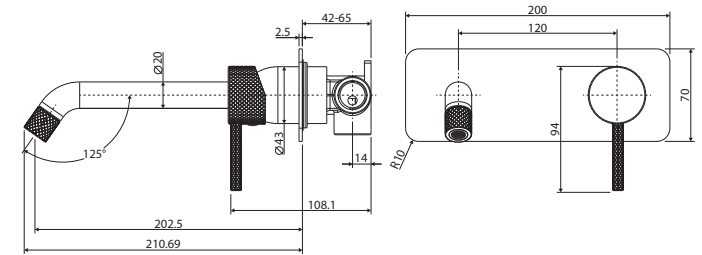
RECTANGULAR PLATE
200MM OUTLET

Features

WELS 5 Star rated, 5L/min when installed over basin

- Unique industrial cross-hatched handle and spout
- Designed for basin and bath
- Free flow aerator included for bath installation
- Made from solid brass
- High quality European cartridge (35 mm)

Please note: This product may have a visible Fienza or Watermark logo.



Available in

- | | | |
|---|---|--|
|  |  |  |
| Electroplated
Chrome
231106-200 | Electroplated
Matte Black
231106B-200 | PVD
Brushed Nickel
231106BN-200 |
|  |  | |
| PVD
Gun Metal
231106GM-200 | PVD
Urban Brass
231106UB-200 | |

Cleaning & Care

- Regularly clean with mild soapy water using a microfibre cloth.
- In highly polluted or coastal locations, we recommend cleaning 2-3 times per week.
- Do not use harsh detergents, bleach, cream cleaners or citrus based cleaners. These substances are abrasive and will damage the surface.
- Do not use undue pressure and wipe in one direction only.



We aim to ensure that specifications are correct at the time of publication. All measurements are shown in millimetres. Always use measurements of actual product received for final specification as the technical drawing may contain differences. Due to printing limitations, physical colour may vary from the image shown. Fienza reserves the right to make modifications without prior notice.